

IDEA DSPControl

Windows 8: Installation Guide



INTRODUCTION

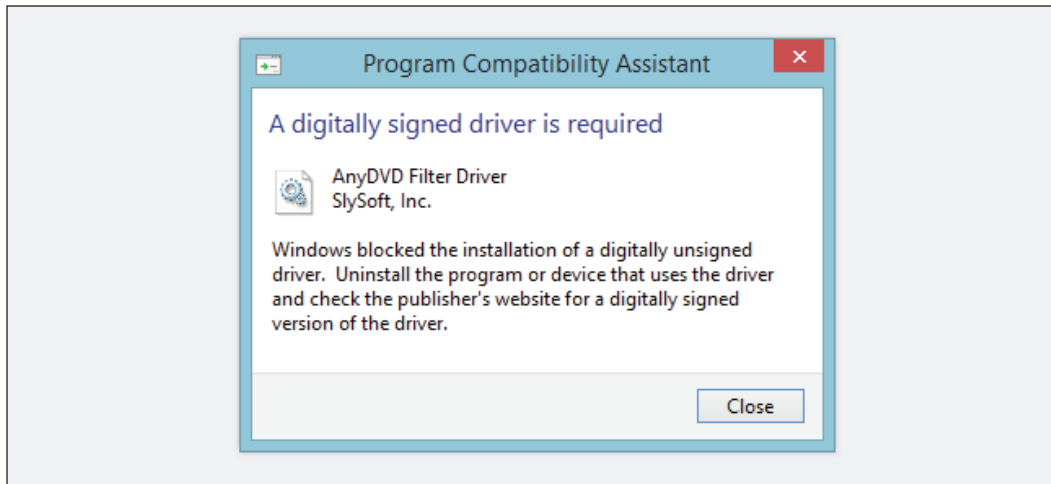
Users running Windows 8.1 will experience installation error due to Microsoft's driver signature default settings.

This installation failure can be easily solved temporarily disabling the "Driver signature enforcement" feature.

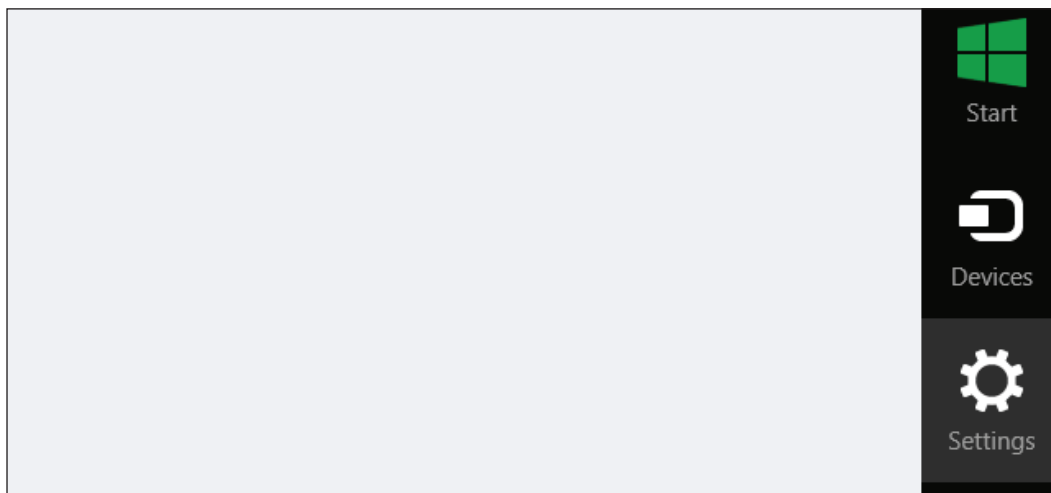
You must re-start your computer in Advanced Start mode and disable the driver signature enforcement feature, following the step-by-step process detailed in this document. Then you can proceed to install IDEA DSPControl software.

Once your installation has been successfully completed you can safely enable the driver signature enforcement again.

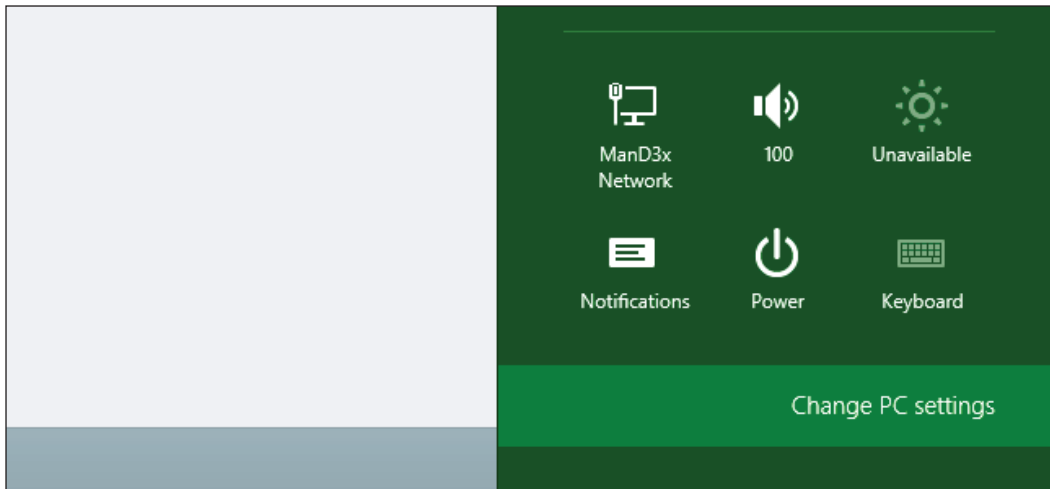
1. REBOOT AS ADVANCED START



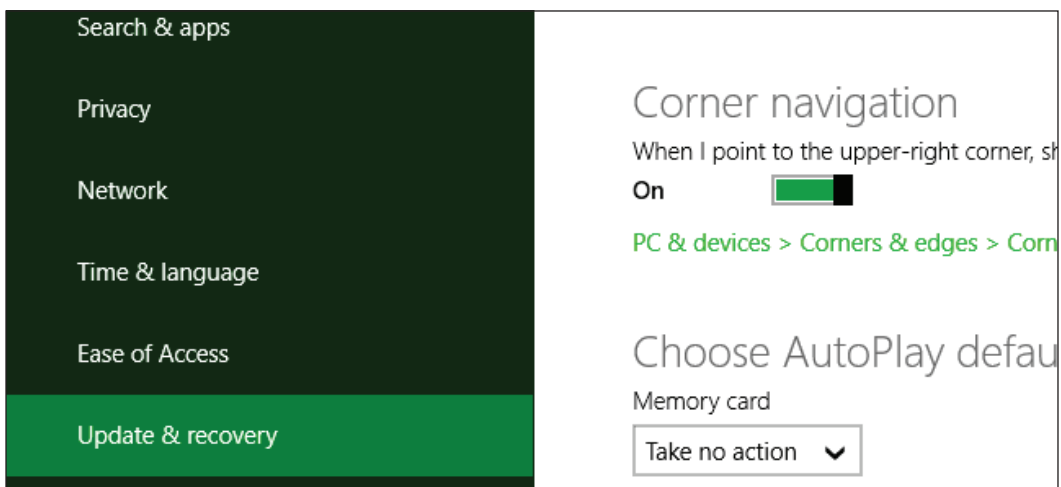
Press the Win + C keyboard combination to bring up the Charms Bar, then click on the Settings Charm.



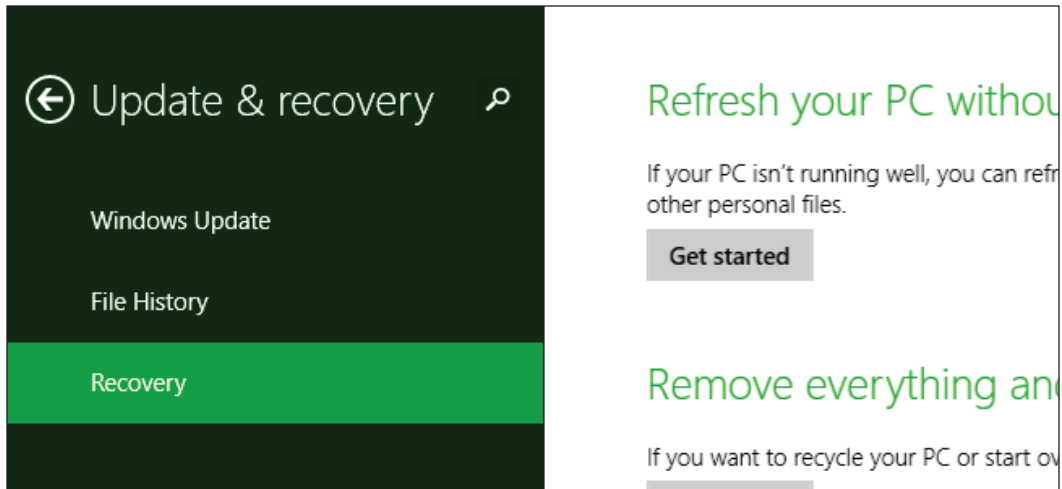
Click on the Change PC settings link.



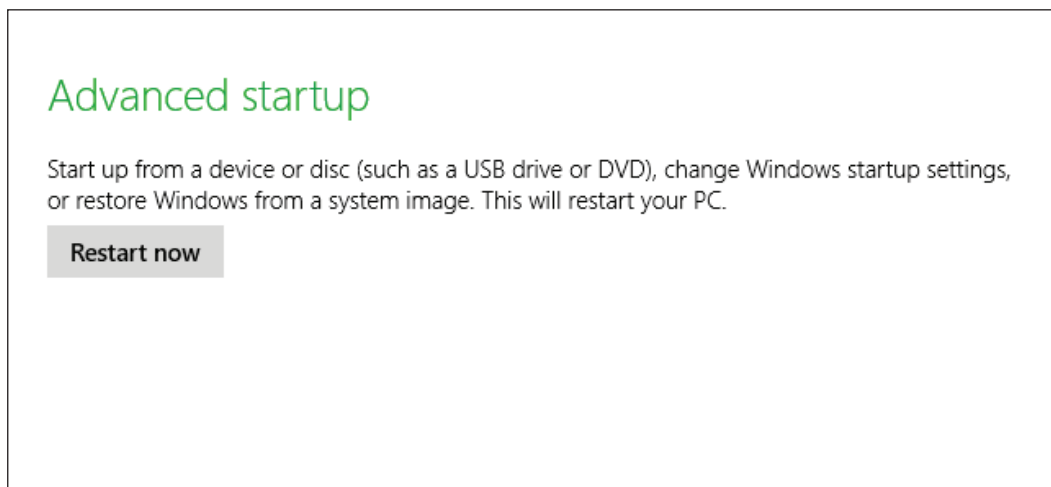
When the Control Panel opens, switch over to the "Update & recovery" section.



Then click on the Recovery option on the left hand side.

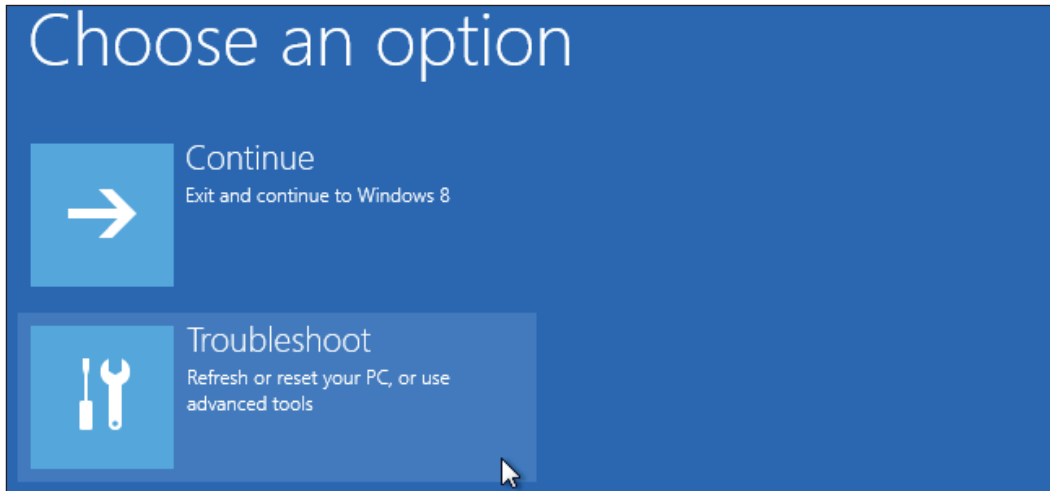


Once selected, you will see an advanced startup section appear on the right hand side. You will need to click on the "Restart now" button.

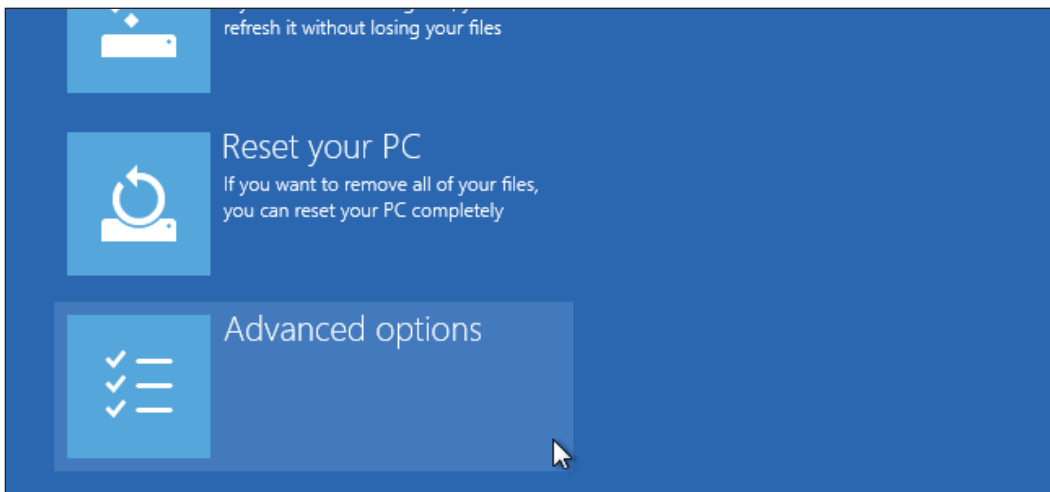


Once your Computer has rebooted you will need to choose the Troubleshoot option.

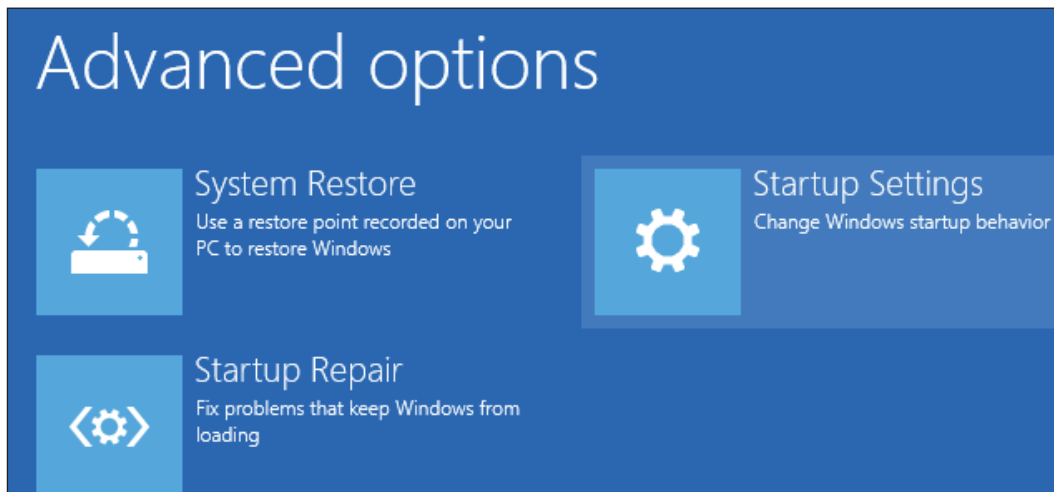
2. DISABLE DRIVE SIGNATURE ENFORCEMENT



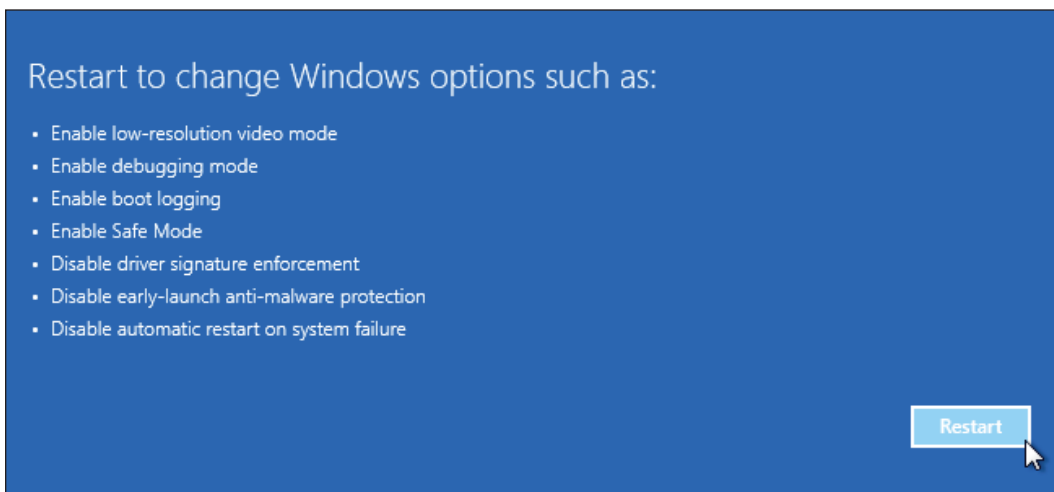
Then head into Advanced options.



Then Startup Settings.



Restart your Computer again.



You will be given a list of startup settings that you can change. The one to look for is “Disable driver signature enforcement”. To choose the setting, you will need to press the F7 key.

Startup Settings

Press a number to choose from the options below:

Use number keys or functions keys F1-F9.

- 1) Enable debugging
- 2) Enable boot logging
- 3) Enable low-resolution video
- 4) Enable Safe Mode
- 5) Enable Safe Mode with Networking
- 6) Enable Safe Mode with Command Prompt
- 7) Disable driver signature enforcement
- 8) Disable early launch anti-malware protection
- 9) Disable automatic restart after failure

Your PC will then reboot and you will be able to install ALLDSP drivers without any error message.

